

Features

- Fast response time
- High photo sensitivity
- Small junction capacitance
- Pb free
- The product itself will remain within RoHS compliant version

Descriptions

PD333-3B/H0/L2 is a high speed and high sensitive PIN photodiode in a standard 5Φplastic package. Due to its black epoxy the device is sensitive to visible and infrared radiation

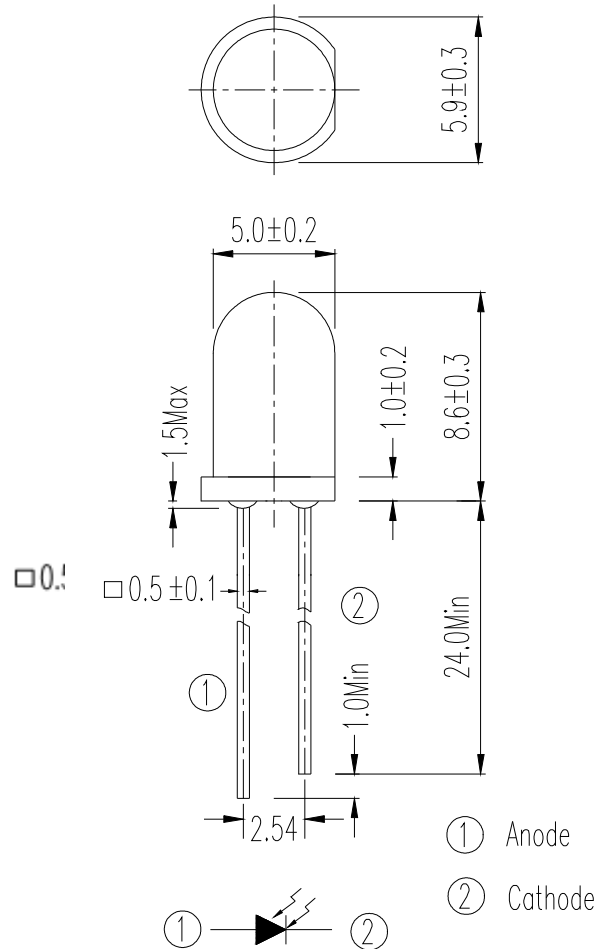
Applications

- High speed photo detector
- Security system
- Camera

Device Selection Guide

LED Part No.	Chip	Lens Color
	Material	
PD	Silicon	Black

Package Dimensions



- Notes:** 1.All dimensions are in millimeters
2.Tolerances unless dimensions $\pm 0.25\text{mm}$

Absolute Maximum Ratings ($T_a=25^\circ\text{C}$)

Parameter	Symbol	Rating	Units
Reverse Voltage	V_R	32	V
Power Dissipation	P_d	150	mW
Lead Soldering Temperature	T_{sol}	260	$^\circ\text{C}$
Operating Temperature	T_{opr}	-25 ~ +85	$^\circ\text{C}$
Storage Temperature	T_{stg}	-40 ~ +100	$^\circ\text{C}$

Notes: *1:Soldering time 10 second

Electro-Optical Characteristics (Ta=25°C)

Parameter	Symbol	Condition	Min.	Typ.	Max.	Units
Rang of Spectral Bandwidth	$\lambda_{0.5}$	-----	840	---	1100	nm
Wavelength of Peak Sensitivity	λ_p	-----	---	940	---	nm
Open-Circuit Voltage	V_{OC}	Ee=5m W/cm ² λ_p =940nm	---	0.39	---	V
Short- Circuit Current	I_{SC}	Ee=1m W/cm ² λ_p =940nm	---	35	---	μ A
Reverse Light Current	I_L	Ee=1m W/cm ² λ_p =940nm V_R =5V	25	35		
Dark Current	I_d	Ee=0m W/cm ² V_R =10V	---	5	30	nA
Reverse Breakdown	BV_R	Ee=0m W/cm ² I_R =100 μ A	32	170	---	V
Total Capacitance	C_t	Ee=0m W/cm ² V_R =5V f=1MHZ	---	18	---	pF
Rise/Fall Time	t_r/t_f	V_R =10V R_L =1K Ω	---	45/45	---	nS
View Angle	2 θ 1/2	IF=20mA	--	80	--	deg

Typical Electro-Optical Characteristics Curves

Fig.1 Power Dissipation vs.

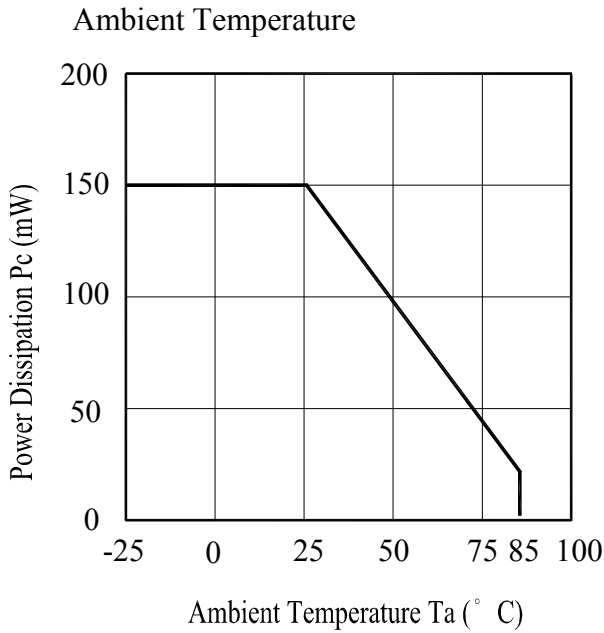


Fig.2 Spectral Sensitivity vs.

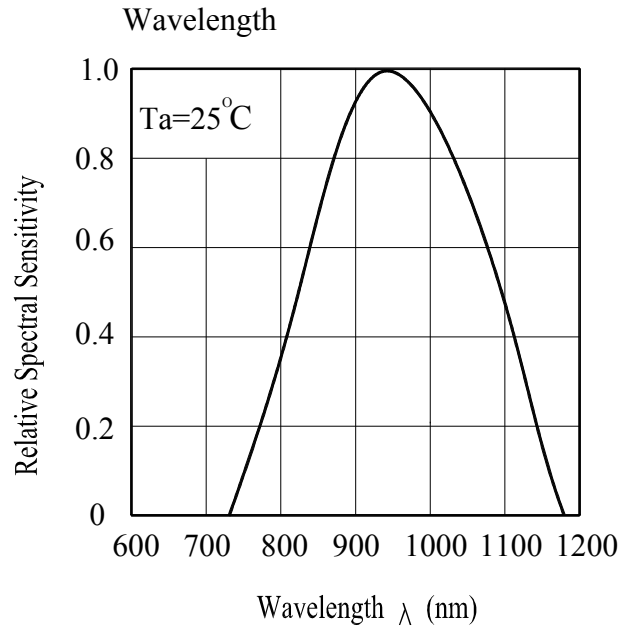


Fig.3 Dark Current vs.

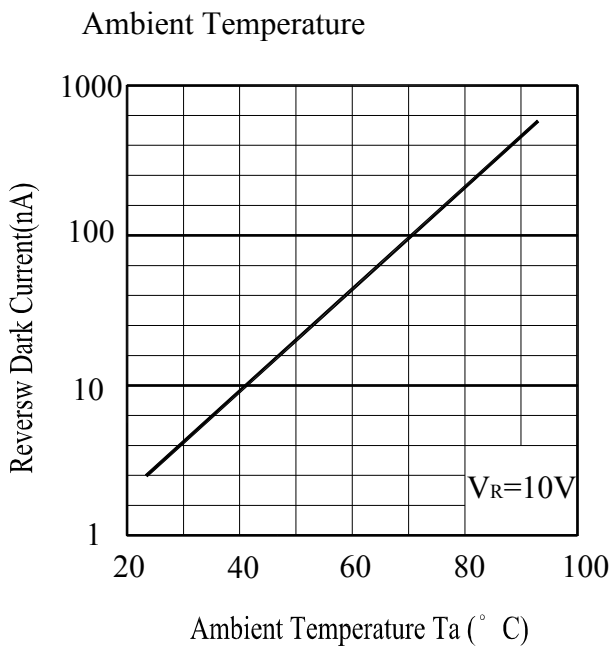
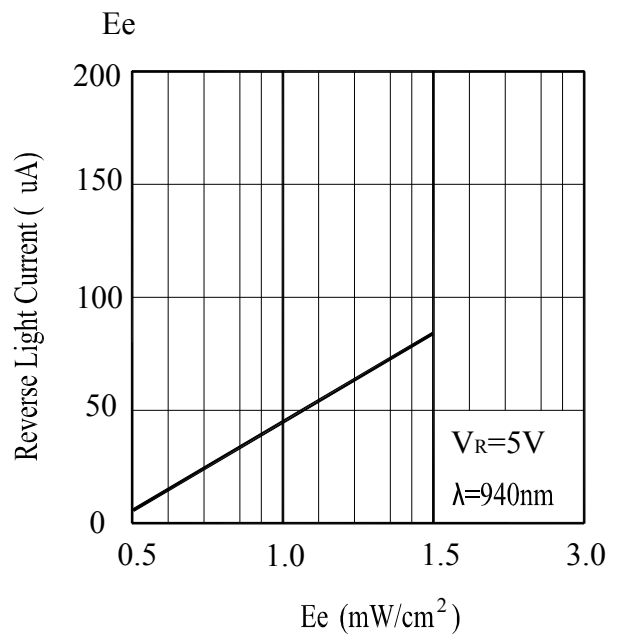


Fig. 4 Reverse Light Current vs.



Typical Electro-Optical Characteristics Curves

Fig.5 Terminal Capacitance vs. Reverse Voltage

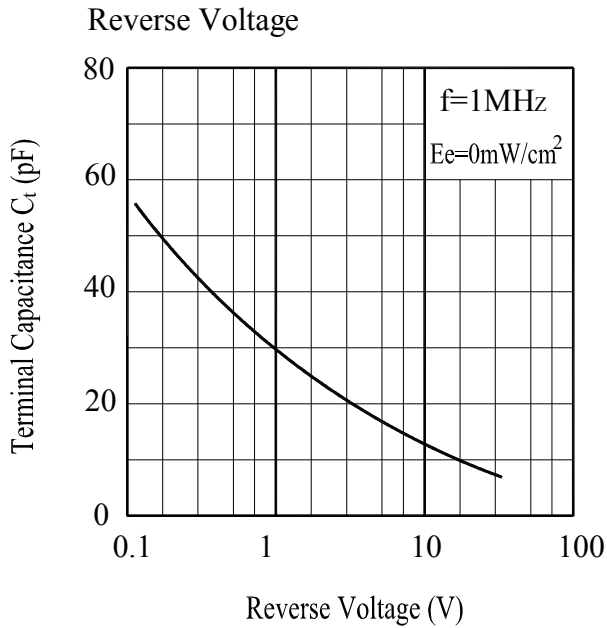
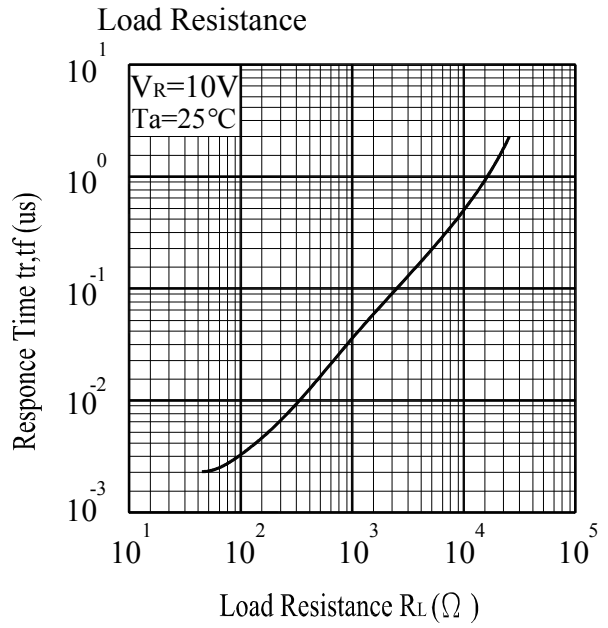


Fig.6 Response Time vs. Load Resistance

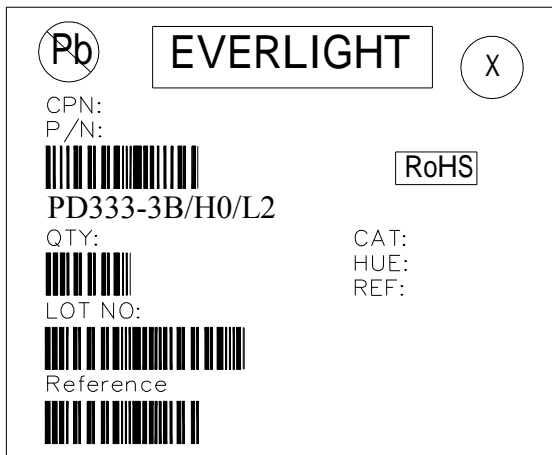


Packing Quantity Specification

1.500PCS/1Bag , 5Bags/1Box

2.10Boxes/1Carton

Label Form Specification



CPN: Customer's Production Number

P/N : Production Number

QTY: Packing Quantity

CAT: Ranks

HUE: Peak Wavelength

REF: Reference

LOT No: Lot Number

X: Month

Reference: Identify Label Number

Notes

1. Above specification may be changed without notice. EVERLIGHT will reserve authority on material change for above specification.
2. When using this product, please observe the absolute maximum ratings and the instructions for using outlined in these specification sheets. EVERLIGHT assumes no responsibility for any damage resulting from use of the product which does not comply with the absolute maximum ratings and the instructions included in these specification sheets.
3. These specification sheets include materials protected under copyright of EVERLIGHT corporation. Please don't reproduce or cause anyone to reproduce them without EVERLIGHT's consent.

EVERLIGHT ELECTRONICS CO., LTD.
Office: No 25, Lane 76, Sec 3, Chung Yang Rd,
Tucheng, Taipei 236, Taiwan, R.O.C

Tel: 886-2-2267-2000, 2267-9936
Fax: 886-2267-6244, 2267-6189, 2267-6306
<http://www.everlight.com>