

1. Device Name TCXO
2. Model Name DSB211SDN
3. Nominal Frequency 26.000 MHz 1XXD26000MAA
4. Mass 0.015g max.
5. Absolute Maximum Ratings

	Item	Symbol	Rating	unit
1	Supply Voltage	V <sub>CC</sub>	-0.3~+6.0	V
2	Storage Temperature Range	T <sub>STG</sub>	-40~+85	°C

#### 6. Recommended Operating Conditions

	Item	Symbol	min.	typ.	max.	unit
1	Supply Voltage	V <sub>CC</sub>	+1.71	+1.8	+1.89	V
			+2.66	+2.8	+2.94	
2	Load Impedance (resistance part) (parallel capacitance)	L <sub>LOAD R</sub>	9	10	11	kΩ
		L <sub>LOAD C</sub>	9	10	11	pF
3	Operating Temperature Range	T <sub>OPR</sub>	-40	-	+85	°C

#### 7. Electrical Characteristics

(T<sub>A</sub>=-40~+85°C, L<sub>LOAD R</sub>//C=10kΩ//10pF, V<sub>CC</sub>=+1.8V or +2.8V, unless otherwise noted)

	Item	Conditions	Limits			unit	Notes	
			min.	typ	max.			
1	Current Consumption		-	-	1.5	mA		
2	Output Level		0.8	-	-	V <sub>P-P</sub>	1	
3	Symmetry	GND level (DC cut)	40/60	-	60/40	%		
4	Frequency Stability	After 2 times reflow	-	-	±1.5	ppm	2,3	
		1.Tolerance	-	-	±0.5	ppm	4	
		2.vs Temperature	T <sub>A</sub> =-30~+85°C	-	-	±1.0	ppm	4
			T <sub>A</sub> =-40~-30°C	-	-	±0.6	ppm	
		3.vs Hysteresys		-	-	±0.1	ppm	
		4.vs Supply Voltage	V <sub>CC</sub> =+1.8V±5%,+2.8V±5%	-	-	±0.1	ppm	
4	G Sensitivity	5.vs Load Variation	L <sub>LOAD R</sub> //C=(10kΩ//10pF)±10%	-	-	±0.1	ppm	
		6.vs Aging	T <sub>A</sub> =Room ambient	-	-	±1.0	ppm/year	
			T <sub>A</sub> =Room ambient	-	-	±1.5	ppm/2years	
			T <sub>A</sub> =Room ambient	-	-	±2.5	ppm/5years	
			T <sub>A</sub> =Room ambient	-	-	±5.0	ppm/10years	
4	G Sensitivity	Gamma Vector of all 3axes from 30 to 1500Hz	-	-	±2.0	ppb/G		
5	Start Up Time	@90% of final V <sub>OUT</sub> level	-	-	2.0	ms		
6	SSB Phase Noise	Relative to f <sub>0</sub> level offset 1kHz	-	-	-130	dBc/Hz		

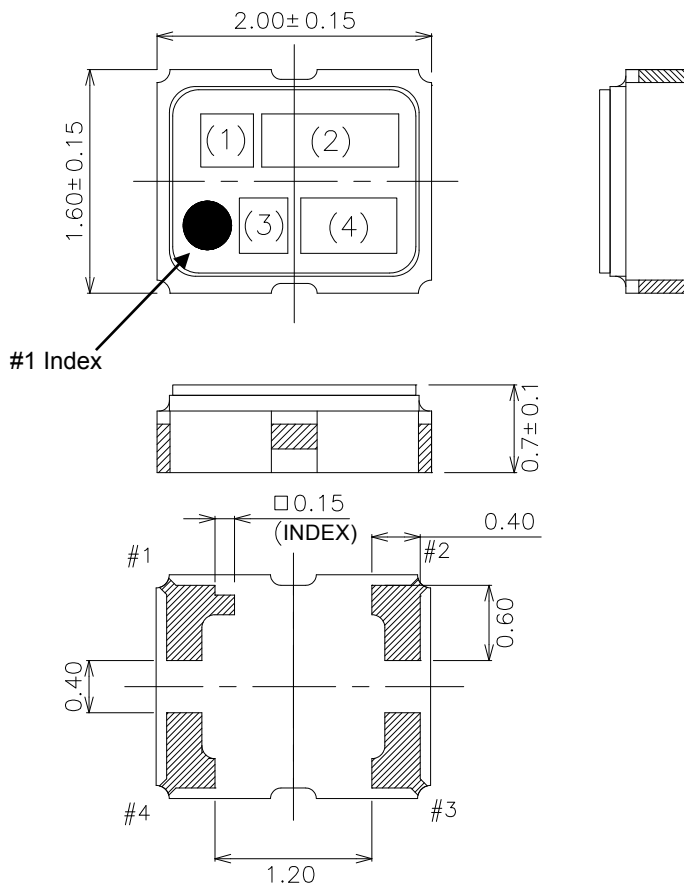
#### Notes

1. Clipped sine wave (DC-coupled)
2. Ref. to nominal frequency
3. Please leave after reflow in 2h or more at room ambient.
4. Ref. to frequency (T<sub>A</sub>=+25°C)

TITLE DSB211SDN TYPE SPECIFICATION		Remark <b>T14-0476</b>		
Date 2014/11/18	Spec. No. <b>1XXD26000MAA</b>	Rev. -	Page 1/2	

## 8. Outline, Pin Connections

### Outline



### Pin Connections

Pin No.	Connection
#1	GND
#2	GND
#3	Output
#4	V <sub>CC</sub>

### Marking

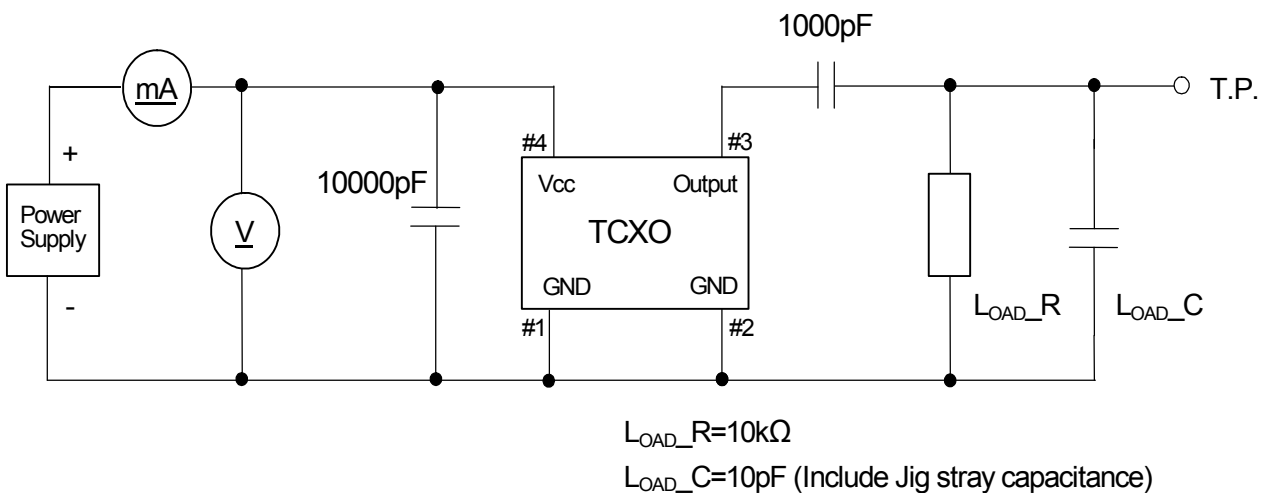
(1) Model code	BN
(2) Frequency	26.0 (MHz, 3digits)
(3) Logo	D
(4) Date code	Year (1digit) +Week (2digits) e.g.2014/1/1 → 401

unit: mm

Dimensional Tolerance: ±0.1

(Unless otherwise noted)

## 9. Measurement Circuit



TITLE  
DSB211SDN TYPE SPECIFICATION

Remark

T14-0476

Date  
2014/11/18

Spec. No.  
1XXD26000MAA

Rev.  
-

Page  
2/2